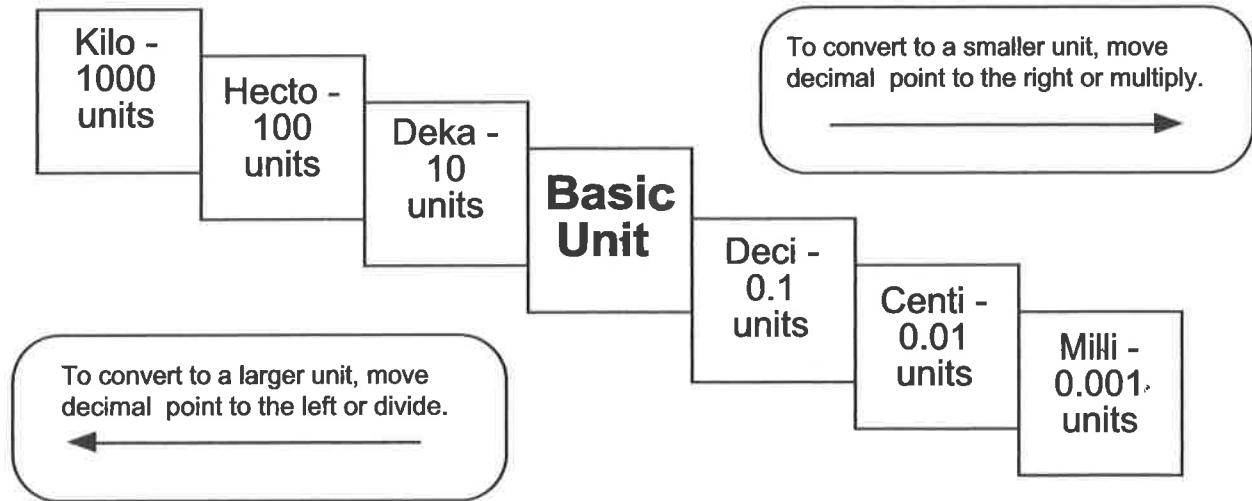


Metric Mania Conversion Practice

Overhead Copy



Try these conversions, using the ladder method.

$1000 \text{ mg} = \underline{\hspace{2cm}} \text{ g}$

$1 \text{ L} = \underline{\hspace{2cm}} \text{ mL}$

$160 \text{ cm} = \underline{\hspace{2cm}} \text{ mm}$

$14 \text{ km} = \underline{\hspace{2cm}} \text{ m}$

$109 \text{ g} = \underline{\hspace{2cm}} \text{ kg}$

$250 \text{ m} = \underline{\hspace{2cm}} \text{ km}$

Compare using $<$, $>$, or $=$.

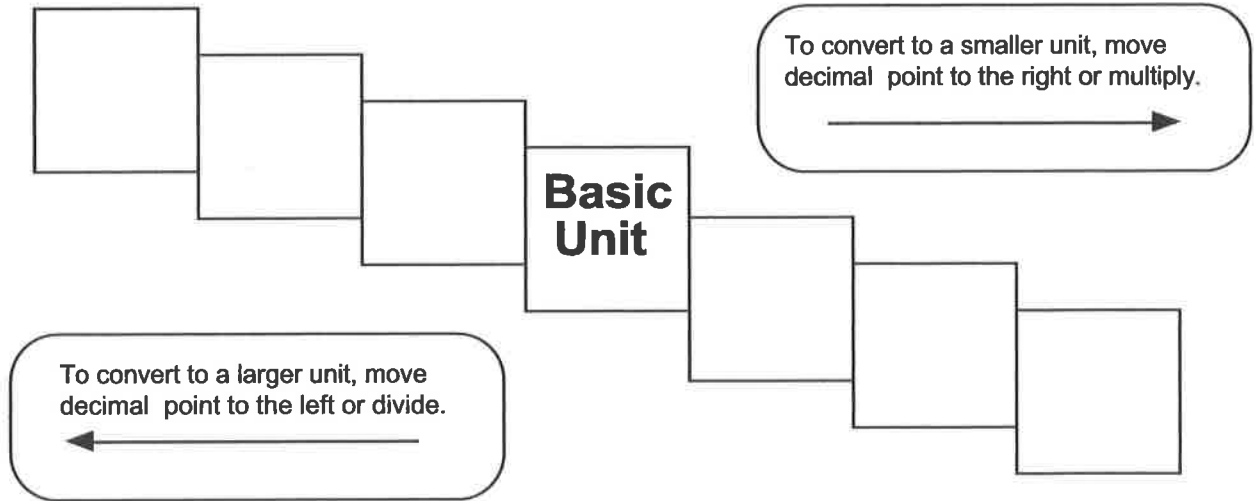
$56 \text{ cm} \bigcirc 6 \text{ m}$

$7 \text{ g} \bigcirc 698 \text{ mg}$

Metric Mania

Conversion Practice

Name _____



Try these conversions, using the ladder method.

$1000 \text{ mg} = \underline{\hspace{2cm}} \text{ g}$

$1 \text{ L} = \underline{\hspace{2cm}} \text{ mL}$

$160 \text{ cm} = \underline{\hspace{2cm}} \text{ mm}$

$14 \text{ km} = \underline{\hspace{2cm}} \text{ m}$

$109 \text{ g} = \underline{\hspace{2cm}} \text{ kg}$

$250 \text{ m} = \underline{\hspace{2cm}} \text{ km}$

Compare using $<$, $>$, or $=$.

$56 \text{ cm} \bigcirc 6 \text{ m}$

$7 \text{ g} \bigcirc 698 \text{ mg}$